



## 5AX-2MT-180-250-205B NEW: Lightweight Type

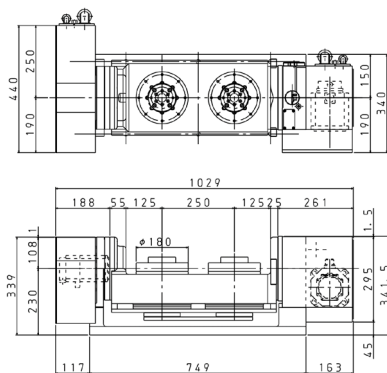
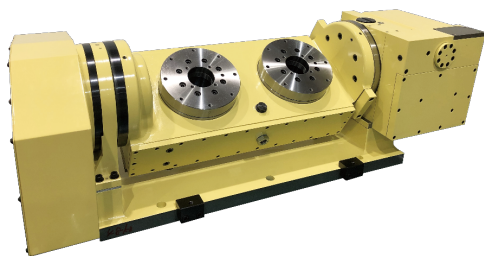
Brand new tilting CNC Rotary Table  
designed for mounting on more  
compact machine tools

A maximum table weight  
(including rotary joint) of  
240Kg has been achieved by  
adopting lightweight design and  
construction  
6 Port Rotary Joint can be used

NiCe - NIKKEN Innovation Centre  
Europe, Advanced Manufacturing  
Park, Brunel Way, Catcliffe  
Rotherham, S60 5FS

Tel: +44 (0) 1709 366306  
Fax: +44 (0) 1709 376683  
Email: [info@nikken-world.com](mailto:info@nikken-world.com)

# MULTI SPINDLE TILTING CNC ROTARY TABLE



Item/Code No.	5AX-2MT-182-250-205B	
Diameter of table $\phi$ mm	180	
Diameter of spindle hole $\phi$ mm	60	
Number of spindles (pitch) mm	2 (250)	
Centre height mm	230	
Axis	Rotary	Tilting
Clamping System	Pneumatic	Air-Hyd 'built-in' booster
Clamping Torque Nm	200	800
Servo Motor $\text{min}^{-1}$	$\alpha$ iS4/2000	$\alpha$ iS8/2000
Min. Increment Deg.	0.001	0.001
Rotation Speed $\text{min}^{-1}$	22.2	11.1
Total Reduction Ratio	1/90	1/180
Indexing Accuracy sec	40	60
Net Weight Kg	240	
Max. Work Load on the table Kg	40	
Max. Work inertia Kg $\text{m}^2$	0.16	