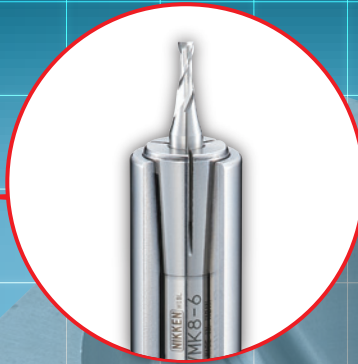


# The Ultimate Chuck for Small Dia. Tools

## MINI-MINI CHUCK **ADVANCED $\alpha$**

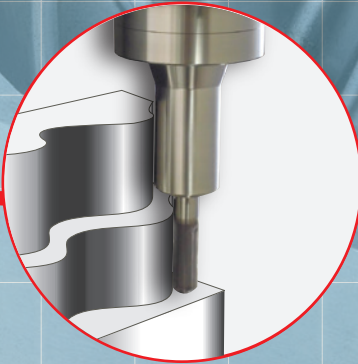
### **1. Strong Gripping at Nose**

Run-out Accuracy : 0.003mm at 4D



### **2. Slim Body Design**

Narrow Body Design Accesses Tight Spots

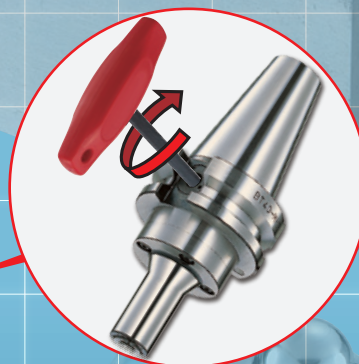


### **3. Quick and Easy**

Powerful Gripping Torque just with a wrench

Direct Screw Type is also available  
Clamp/Unclamp directly from the end of tool

\* Direct-screw type keeps same product code.



30,000min<sup>-1</sup>  
& G2.5 !

**Titanium Nitred Bearing Nut (HV2,200)**



**NEW ADVANCED  $\alpha$**

Standard Type of MINI-MINI CHUCK is more advanced

Refurbish Internal Component

Higher Run-out Accuracy, Operability and Durability

**NIKKEN**

NIKKEN KOSAKUSHO WORKS, LTD.  
5-1, 1-chome, Minamishinden, Daito-shi, Osaka-fu, Japan

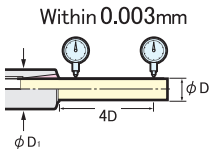
Web: www.nikken-kosakusho.co.jp/en  
Tel: +81-(0)72-869-5820 Fax: +81-(0)72-869-6220  
e-mail: export@nikken-kosakusho.co.jp

# MINI-MINI CHUCK ADVANCED ALPHA



## BT

Coolant-thru becomes the standard.  
(MMC8 / MMC12)



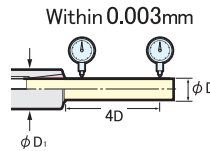
Extra-long size is available



## NBT

Coolant-thru becomes the standard.  
(MMC8 / MMC12)

NBT Toolholders are interchangeable between standard and double face contact spindles greater flexibility.



Extra-long size is available

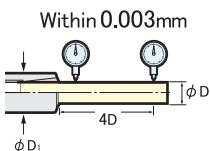


Taper	Code No.	φD1	φD
<b>BT30</b>	<b>BT30 -MMC 4 -105-AA</b>	1~ 4	15
	<b>-MMC 8C-105-AA</b>	2~ 8	20
	<b>-MMC12C-105-AA</b>	4~12	30
<b>BT40</b>	<b>BT40 -MMC 4 - 90-AA</b>	1~ 4	15
	<b>-MMC 8C- 90-AA</b>	2~ 8	20
	<b>-120-AA</b>	2~ 8	20
	<b>-150-AA</b>	2~ 8	20
	<b>-180-AA</b>	2~ 8	20
<b>BT40</b>	<b>-MMC12C- 90-AA</b>	4~12	30
	<b>-120-AA</b>	4~12	30
	<b>-150-AA</b>	4~12	30
	<b>-180-AA</b>	4~12	30
	<b>-180-AA</b>	4~12	30
<b>BT50</b>	<b>BT50 -MMC 4 -105-AA</b>	1~ 4	15
	<b>-MMC 8C-105-AA</b>	2~ 8	20
	<b>-135-AA</b>	2~ 8	20
	<b>-165-AA</b>	2~ 8	20
	<b>-195-AA</b>	2~ 8	20
	<b>-MMC12C-105-AA</b>	4~12	30
<b>BT50</b>	<b>-135-AA</b>	4~12	30
	<b>-165-AA</b>	4~12	30
	<b>-195-AA</b>	4~12	30
	<b>-195-AA</b>	4~12	30

Taper	Code No.	φD1	φD
<b>NBT30</b>	<b>NBT30 -MMC 4 -105-AA</b>	1~ 4	15
	<b>-MMC 8C-105-AA</b>	2~ 8	20
	<b>-MMC12C-105-AA</b>	4~12	30
<b>NBT40</b>	<b>NBT40 -MMC 4 - 90-AA</b>	1~ 4	15
	<b>-MMC 8C- 90-AA</b>	2~ 8	20
	<b>-120-AA</b>	2~ 8	20
	<b>-150-AA</b>	2~ 8	20
	<b>-180-AA</b>	2~ 8	20
<b>NBT40</b>	<b>-MMC12C- 90-AA</b>	4~12	30
	<b>-120-AA</b>	4~12	30
	<b>-150-AA</b>	4~12	30
	<b>-180-AA</b>	4~12	30
	<b>-180-AA</b>	4~12	30
<b>NBT50</b>	<b>NBT50 -MMC 4 -105-AA</b>	1~ 4	15
	<b>-MMC 8C-105-AA</b>	2~ 8	20
	<b>-135-AA</b>	2~ 8	20
	<b>-165-AA</b>	2~ 8	20
	<b>-195-AA</b>	2~ 8	20
	<b>-MMC12C-105-AA</b>	4~12	30
<b>NBT50</b>	<b>-135-AA</b>	4~12	30
	<b>-165-AA</b>	4~12	30
	<b>-195-AA</b>	4~12	30
	<b>-195-AA</b>	4~12	30

## HSK

Coolant-thru have already become the standard (MMC8 / MMC12)



Extra-long size is available



Taper	Code No.	φD1	φD
<b>HSK 50A</b>	<b>HSK 50A-MMC 4 -128-AA</b>	1~ 4	15
	<b>-MMC 8C-127-AA</b>	1~ 4	15
	<b>-157-AA</b>	2~ 8	20
	<b>-187-AA</b>	2~ 8	20
	<b>-MMC12C-129-AA</b>	4~12	30
<b>HSK 63A</b>	<b>HSK 63A-MMC 4 -116-AA</b>	1~ 4	15
	<b>-MMC 8C-115-AA</b>	2~ 8	20
	<b>-145-AA</b>	2~ 8	20
	<b>-175-AA</b>	2~ 8	20
	<b>-MMC12C-117-AA</b>	4~12	30
<b>HSK100A</b>	<b>HSK100A-MMC 4 -131-AA</b>	1~ 4	15
	<b>-MMC 8C-130-AA</b>	2~ 8	20
	<b>-160-AA</b>	2~ 8	20
	<b>-190-AA</b>	2~ 8	20
	<b>-MMC12C-130-AA</b>	4~12	30
<b>HSK 50E</b>	<b>HSK 50E-MMC 4 -128-AA</b>	1~ 4	15
	<b>-MMC 8C-127-AA</b>	2~ 8	20
	<b>-MMC12C-129-AA</b>	4~12	30
<b>HSK 63E</b>	<b>HSK 63E-MMC 4 -116-AA</b>	1~ 4	15
	<b>-MMC 8C-115-AA</b>	2~ 8	20
	<b>-MMC12C-117-AA</b>	4~12	30
<b>HSK 63F</b>	<b>HSK 63F-MMC 4 -128-AA</b>	1~ 4	15
	<b>-MMC 8C-127-AA</b>	2~ 8	20
	<b>-MMC12C-129-AA</b>	4~12	30

## MINI-MINI CHUCK COLLET

### Standard Type

for MMC4

### MPK Collet



Code No.

**MPK 4-1, 1.5, 2, 2.5, 3, 3.5, 4**

### PMK Collet



Code No.

**PMK 8-2, 2.2, 2.4, 3, 4, 5, 6, 7, 8\***  
**PMK 12-4, 5, 6, 8, 10, 12**

### Coolant-thru Type

Coolant Perfect Sealing

### VMK Collet



Code No.

**VMK 8-2, 3, 4, 5, 6, 8**  
**VMK12-4, 5, 6, 8, 10, 12**

Oil Jet Coolant

### VMK-J Collet



Code No.

**VMK 8-2J, 3J, 4J, 5J, 6J, 8J**  
**VMK12-4J, 5J, 6J, 8J, 10J, 12J**

\*Please note the acceptable shank tolerance is h6.  
\*Even the gripping range of PMK collet is 0.2mm/ dia. (e.g. PMK8-2: 1.8~2.0), but the shank tolerance of h6 is highly recommended for precision machining.