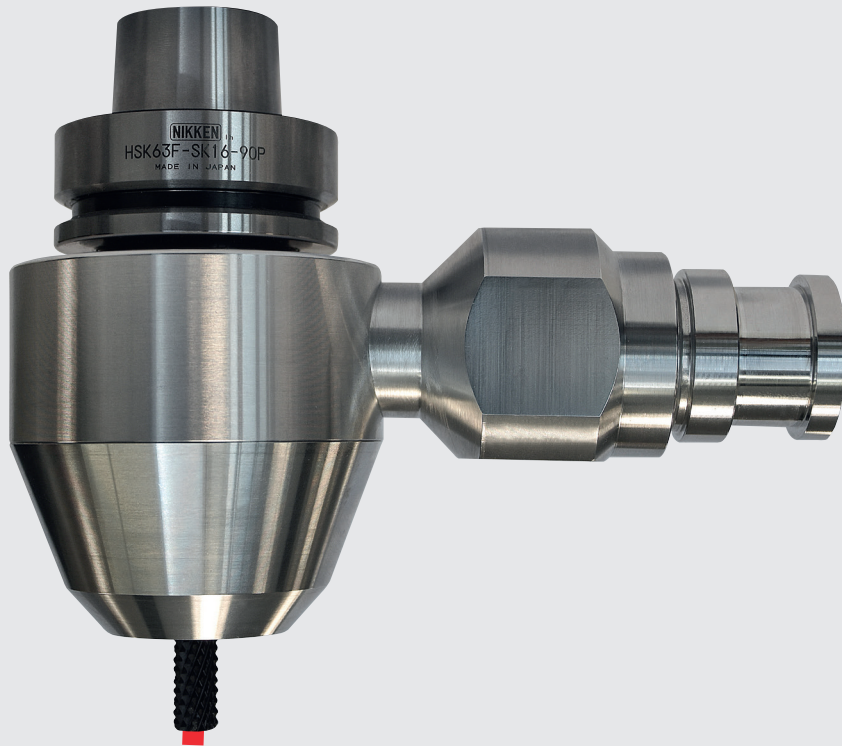


Introducing the innovative new  
**V-Ex vacuum extractor**

# IT SUCKS!

and sucks...and sucks...and sucks  
and sucks...and sucks...and sucks  
and sucks...and sucks...and sucks  
and sucks...and sucks...and sucks  
a n d s u c k s . . . a n d



SUCKS

For a demonstration of the V-Ex extraction system at our NICE facility or more information call 01709 366306.

**NIKKEN Innovation Centre Europe**

Advanced Manufacturing Park, Brindley Way, Catcliffe, Rotherham, S60 5FS, UK

T: +44 (0)1709 366306 | F: +44 (0)1709 376683

E: info@nikken-world.com | [www.nikken-world.com](http://www.nikken-world.com)

Machining non-metallic materials can generate a lot of waste by-product and dust. These potentially abrasive particles accelerate the wear of your machine tool components, and create a health risk through dust inhalation. It's essential to extract these particles to prolong machine tool life and ensure you comply with health and safety regulations.

Existing extraction solutions however, can add up to 10% to the cost of a new machining centre. This high cost deters many companies from entering the market for machining materials like composites, plastics and foams, which produce a large amount of dust. To address this problem, NIKKEN has developed an innovative, low-cost vacuum extraction system that can be retrofitted to any machining centre.

**FEATURES**

The patented new V-Ex design requires nothing but a single 6-bar air supply for effective on-machine particle removal. Using the air feed alone, the extractor multiplies the air flow to efficiently remove fine and abrasive particles from around the cutting tool. It ejects them at high speed via an outlet, which can be fitted to a filter system, another vacuum pump or a vent hose, depending on your application.

With no need for a power supply and no moving parts, you can use the V-Ex in both wet and dry cutting conditions. It can handle many different particle types and sizes, including conductive dusts.

The V-Ex is compatible with a huge range of machining centres, making it an easy-to-fit, low-cost solution for any non-metallic machining operation.

**REPLACEMENT PARTS**

**O-rings**

Internal venturi nozzle

Housing with mounting holes

Variable parts	Size
Hose connectors	32mm diameter
	40mm diameter
	50.8mm diameter

**Cowling diameters**

SK16	40mm diameter
SK20	48.5mm diameter

**Nozzle lengths**

To fit SK16	90mm
	120mm
To fit SK20	95mm
	110mm
	120mm

THE SPIRIT OF INNOVATION

